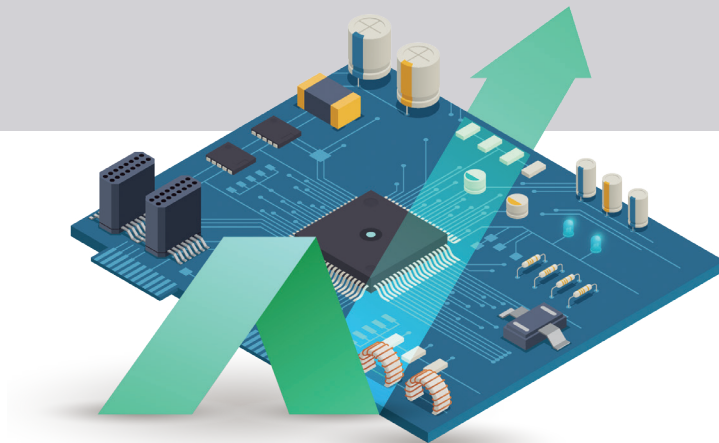


Kenzo

ALL DC INVERTER



DESIGN AND HIGH PERFORMANCE



Toyotomi Kenzo air conditioners stands out for its modern design, high performance, low consumption as well as their multiple functions in order to create the ideal climate every season with maximum energy savings.

The Ionizer, the enhanced Hepa 3PLUS triple filter (Hepa / Biology Sterilization / Catechin), the Active Carbon filter as well as the Self Clean sterilization function at 56°C and Autoclean function ensure a clean and healthy atmosphere in the room.

They are equipped with Hotel Menu and Door Control functions to provide better operation to hotel units.

A+++

HIGH ENERGY CLASS*



WiFi FUNCTION



IONIZER



SELF CLEAN STERILIZATION FUNCTION AT 56°C



ENERGY SAVING FUNCTION



8°C HEATING FUNCTION

* Available for models 9,000 BTU & 12,000 BTU.

Kenzo ALL DC Inverter			KTN/KTG-09CH	KTN/KTG-12CH	KTN/KTG-18CH	KTN/KTG-24CH
PDESIGN						
PDESIGNC		kW	2,7	3,2	5,3	7,1
Pdesignh (Average Zone)		kW	2,7	2,8	4,2	5,6
Pdesignh (Warmer Zone)		kW	2,9	3,0	4,3	5,7
COOLING / HEATING CAPACITY						
COOLING*	CAPACITY	Btu/h	9,212	10,918	18,084	24,225
		kW	2,70	3,20	5,30	7,10
	RANGE CAPACITY	Btu/h	1.365 - 12.624	2.400 - 13.650	3.412 - 21.837	6.800 - 30.200
		kW	0,40 - 3,70	0,70 - 4,00	1,00 - 6,40	2,00 - 8,85
HEATING*	CAPACITY	Btu/h	10,236	11,601	19,107	26,614
		kW	3,00	3,40	5,60	7,80
	RANGE CAPACITY	Btu/h	2.388 - 13.648	2.400 - 14.000	4.094 - 23.202	6.150 - 32.200
		kW/h	0,70 - 4,00	0,70 - 4,10	1,20 - 6,80	1,80 - 9,45
SEASONAL EFFICIENCY						
COOLING Pdesignc	SEER		8,5	8,5	7,3	7,0
	COOLING ENERGY CLASS		A+++	A+++	A++	A++
HEATING Pdesignh	SCOP AVERAGE ZONE		4,6	4,1	4,2	4,2
	ENERGY CLASS AVERAGE ZONE		A++	A+	A+	A+
	SCOP WARMER ZONE		5,7	5,1	5,6	5,4
	ENERGY CLASS WARMER ZONE		A+++	A+++	A+++	A+++
ELECTRICAL DATA						
PHASE-VOLTAGE-FREQUENCY		Ph-V-Hz	1-220-240V-50	1-220-240V-50	1-220-240V-50	1-220-240V-50
COOLING Pdesignc	ANNUAL ELECTRICITY CONSUMPTION (Q _{CE})	kWh/a	111	132	254	355
	ANNUAL ELECTRICITY CONSUMPTION AVERAGE ZONE (Q _{HE})	kWh/a	822	956	1400	1867
HEATING Pdesignh	ANNUAL ELECTRICITY CONSUMPTION WARMER ZONE (Q _{HE})	kWh/a	712	824	1075	1478
PERFORMANCES						
HUMIDITY REMOVAL		L/h	0,8	1,4	1,8	2,4
AIR FLOW VOLUME INDOOR UNIT (SHi/Hi/Mhi/M/MLo/Lo/Slo/SS)		m³/h	610/530/500/450/350/290/230/180	650/550/470/420/380/350/310	1000/960/870/810/720/640/600/350	1250/1100/1000/950/900/850/800/600
SOUND POWER LEVEL OF INDOOR UNIT COOLING (SHi/Hi/Mhi/M/MLo/Lo/Slo/SS)		dB(A)	57/50/48/45/40/37/36/32	60/53/49/46/43/40/38	60/58/56/54/48/44/41/38	64/59/56/55/53/51/48/42
SOUND POWER LEVEL OF INDOOR UNIT HEATING (SHi/Hi/Mhi/M/MLo/Lo/Slo)		dB(A)	57/50/48/45/44/43/41	58/50/47/44/42/40/37	60/58/55/52/51/50/47	64/62/58/56/55/51/50
SOUND PRESSURE LEVEL OF INDOOR UNIT COOLING (SHi/Hi/Mhi/M/MLo/Lo/Slo/SS)		dB(A)	39/36/34/31/26/24/22/18	43/39/37/34/31/28/26	47/45/43/41/35/30/28/25	48/44/41/40/38/37/35/27
SOUND PRESSURE LEVEL OF INDOOR UNIT HEATING (SHi/Hi/Mhi/M/MLo/Lo/Slo)		dB(A)	39/36/34/31/30/29/27	41/38/35/32/30/28/25	46/44/41/38/37/36/33	50/47/43/41/40/38/36
SOUND POWER LEVEL OF OUTDOOR UNIT (Hi)		dB(A)	61	60	65	70
SOUND PRESSURE LEVEL OF OUTDOOR UNIT (Hi)		dB(A)	51	52	56	59
DIMENSIONS AND WEIGHT						
INDOOR UNIT	PRODUCT DIMENSIONS (W*H*D)	mm	835x275x200	835x275x200	943x333x246	1078x333x246
	NET WEIGHT	Kg	8,5	9	13	15
OUTDOOR UNIT	PRODUCT DIMENSIONS (W*H*D)	mm	732x555x330	732x555x330	802x555x350	958x660x402
	NET WEIGHT	Kg	23,5	27	31,5	41,5
OUTDOOR			METALLIC	METALLIC	METALLIC	METALLIC
CONNECTION PIPE SIZE						
PIPING SIZE	LIQUID	mm (inch)	6,35 (1/4")	6,35 (1/4")	6,35 (1/4")	6,35 (1/4")
	GAS	mm (inch)	9,53 (3/8")	9,53 (3/8")	12,7 (1/2")	15,88 (5/8")
	MAXIMUM PIPE LENGTH	m	15	20	25	25
	MAXIMUM PIPE HEIGHT	m	10	10	10	10
GENERAL SPECIFICATIONS						
INVERTER FUNCTION			YES	YES	YES	YES
OPERATION TEMPERATURE LIMIT	COOLING	°C	-15 ~ 50	-15 ~ 50	-15 ~ 50	-15 ~ 50
	HEATING	°C	-15 ~ 30	-15 ~ 30	-15 ~ 30	-15 ~ 30
REFRIGERANT			R32	R32	R32	R32
REFRIGERANT CHARGE		kg	0,50	0,75	0,85	1,50
CO ₂ EQUIVELANT		Tonnes	0,33750	0,50625	0,57375	1,01250
IONIZER			YES	YES	YES	YES
WiFi PRE-INSTALLED			YES	YES	YES	YES
FILTERS			HIGH DENSITY PREFILTER			
			1 x HEPA 3PLUS (HEPA/CATECHIN/BIOLOGY STERILIZATION)			
			1 x ACTIVE CARBON			

(* HARMONISED STANDARD: EN14511:2007, EN12102*
GLOBAL WARMING POTENTIAL (GWP) 675